

Digital Logger

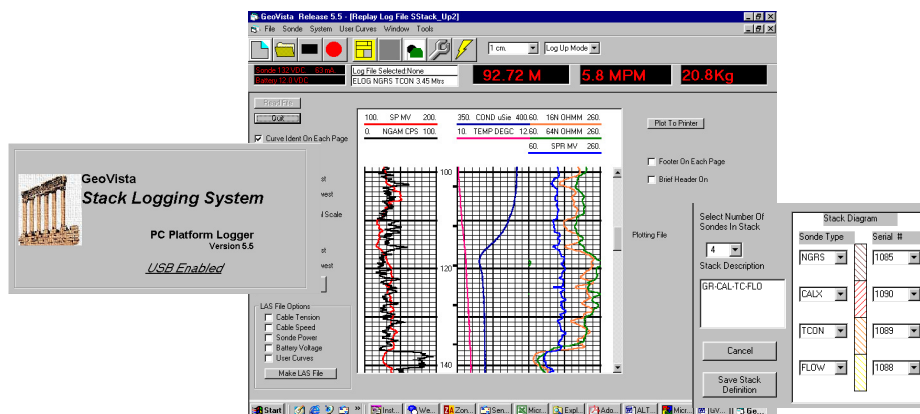
- Equipped with microprocessor controlled digital communications and interfacing capability with most modern digital sondes and older pulse sondes
- USB serial data link to PC for data display and storage
- Splash-proof and dust-proof housing to IP65 standard
- 110 to 240 V ac power input
- Compact (200 x 200 x 70 mm).



Logging Software

The logger is supplied with the *Geovista Platform Logger* data acquisition software. This features a facility for user functions, an active diagnostic and control window and data conversion into LAS format for readability by third part software.

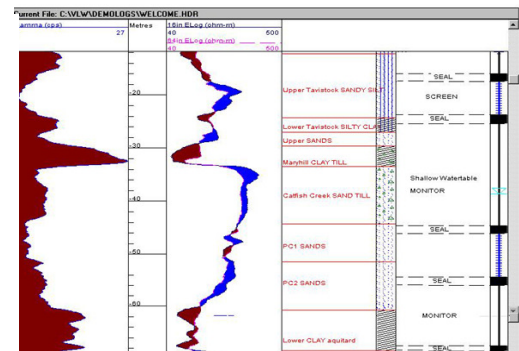
The software which runs under Win'XP, Vista and 7 operating systems. also allows for flexible sonde stack configuration, variable log data resolution (8,16,24 or 32 bit) and automatic recording of operational parameters.



Log Data Processing Software

Geovista log data in LAS format can be imported into commercially available log processing software like for instance *Viewlog* of Viewlog Systems and *WellCad* of ALT.

These offer useful options for log computations, corrections, correlation and versatile presentations



Geovista reserve the right to change the products' list and specifications without prior notice